

WEIGHT oz ( g)

cables: .141

mounting instructions : M01

CHARACTERISTICS

NOMINAL IMPEDANCE	50 $\Omega$
FREQUENCY RANGE	0-18 GHz
TEMPERATURE RATING	-40/+125 °C
VSWR	1.05 + 0.007 F(GHz)
RF INSERTION LOSS	0.1 $\mu$ F dB Maxi
VOLTAGE RATING	500 Vrms Maxi
DIELECTRIC WITHSTANDING VOLTAGE	1500 Vrms mini
INSULATION RESISTANCE	5000 M $\Omega$ mini
HERMETIC SEAL	NA cc/s Atm.cm <sup>3</sup> /s
LEAKAGE	0.641 psi .0044 MPa
( Low atmospheric air pressure )	-

STANDARDISATION	MIL C 39012
	CECC 22000
	IEC 169-16
DS 6811 - Aeronautic applications	

CABLE RETENTION	61.2 lb mini 272 N
CENTER CONTACT RETENTION	
Axial force - mating end	6.075 lb mini 27 N
Axial force - opposite end	6.075 lb mini 27 N
Torque (Min)	NA Inch.oz cm.N
RECOMMENDED TORQUES	
Mating	NA Inch. Lb cm.N
Panel nut	NA Inch. Lb cm.N
Clamp nut	17.72 Inch. Lb 200 cm.N

CONSTRUCTION

CONNECTOR PARTS	MATERIALS	FINISH
BODY	STAINLESS STEEL	PASSIVATED
OUTER CONTACT	STAINLESS STEEL	PASSIVATED
CENTER CONTACT	BERYLLIUM COPPER	GOLD
INSULATOR	POLYETHERIMID RESIN	-
INSULATOR	PTFE	-
GASKET	FLUOROCARBONE + FLUOROSILICON	-
-	-	-
-	-	-
-	-	-

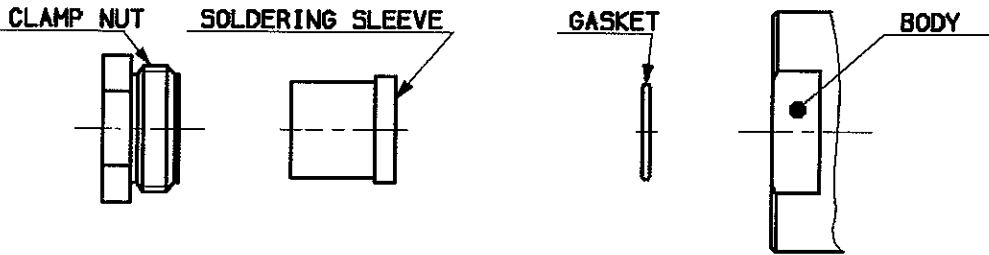
ISSUE	REVISION No	DESCRIPTION	BY	DATE
.	.	.	.	.
.	.	.	.	.
.	.	.	.	.

Initiated on 24-JAN-91  
Superseded on \_\_\_\_\_

The information given here is subject to change without notice. Design changes may be in order to improve the product.



**MOUNTING INSTRUCTIONS**



We recommend a cable thermal preconditioning before assembly .

①

1-1 Strip the center conductor and trim it

	.141	.141 microp
Stripping tool	R282 053	R282 053 010
Trimmer	R282 067	R282 067 010

Stripping	a	b	c	d	e
Inch	.125	-	-	-	-
mm	3.17	-	-	-	-

②

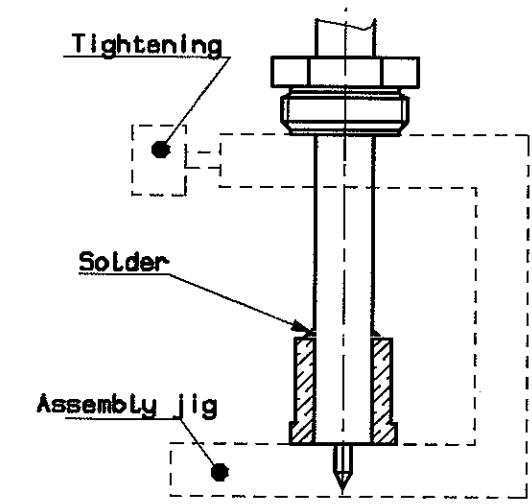
2-1 Slide clamp nut onto the cable .

2-2 Slide soldering sleeve on the cable and get the cable against assembly jig , tighten the cable .

2-3 Solder sleeve onto the cable .

2-4 Let the assembly cool down before removing it from the jig .

2-5 Cut the dielectric flush to the sleeve

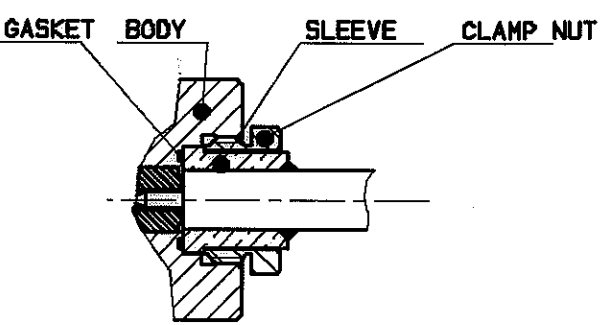


③

3-1 Put the gasket into the body .

3-2 Screw the sub-assembly into the body .

Recommended coupling torque : 17.72 in. Lb



ISSUE	REVISION No	DESCRIPTION	BY	DATE
.	.	.	.	.
.	.	.	.	.
.	.	.	.	.

Initiated on \_\_\_\_\_

Superseded on \_\_\_\_\_

The information given here is subject to change without notice. Design changes may be in order to improve the product.

